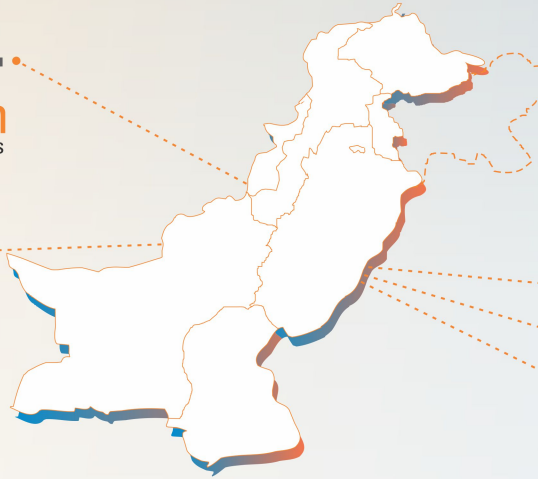


SCALE & SCOPE

251,694
 Children
 3-16 Years

144
 Rural Districts



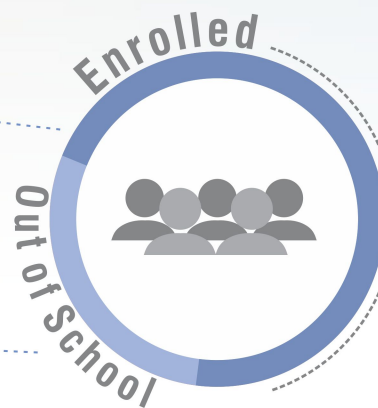
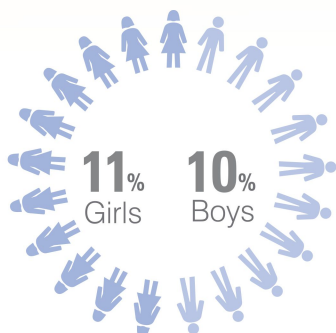
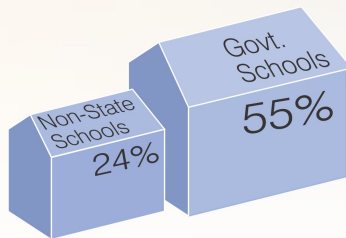
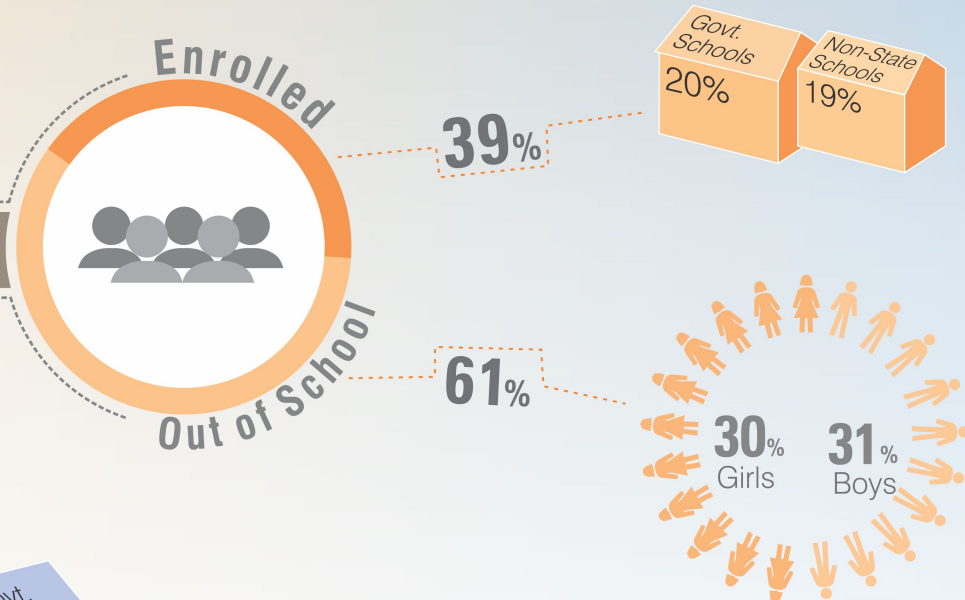
NATIONAL RURAL

- 5,500 Schools
- 4,178 Villages
- 82,837 Households

ENROLLMENT

3-5 years

Proportion of enrolled children (3-5 years) has decreased as compared to 2013 (41%).



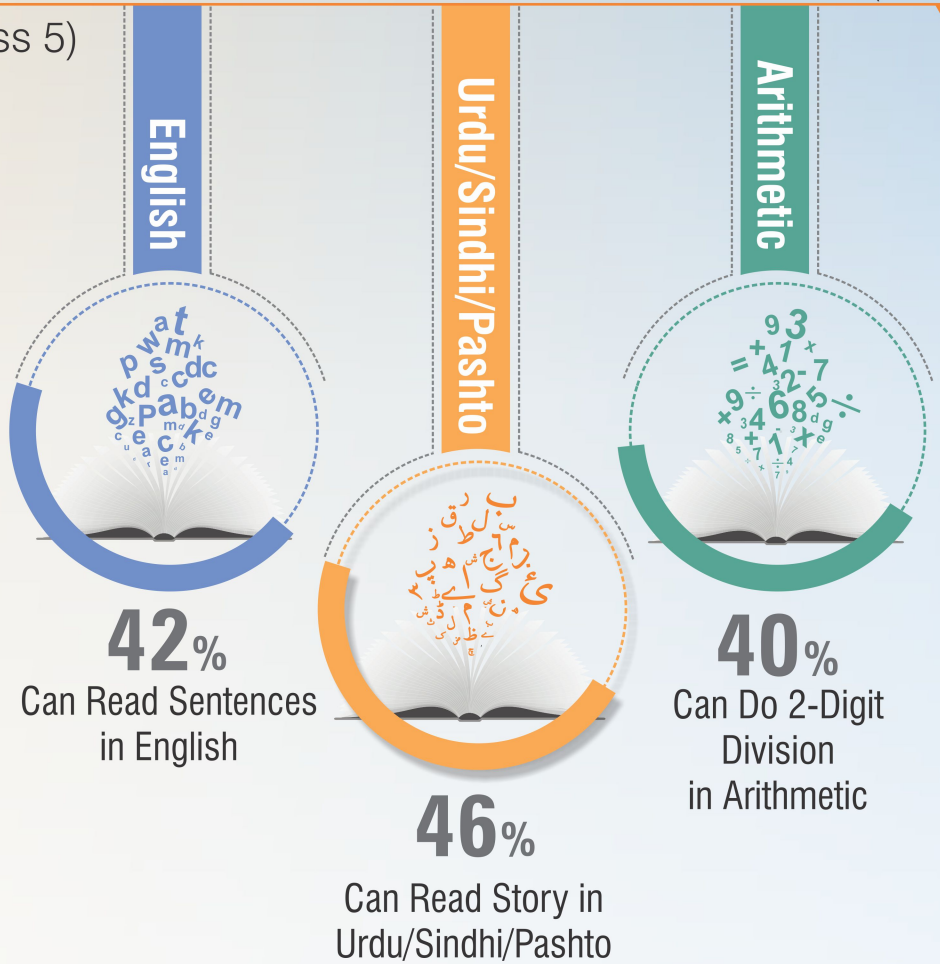
6-16 years

Proportion of out-of-school children (6-16 years) has remained the same as that of 2013.

LEARNING LEVELS

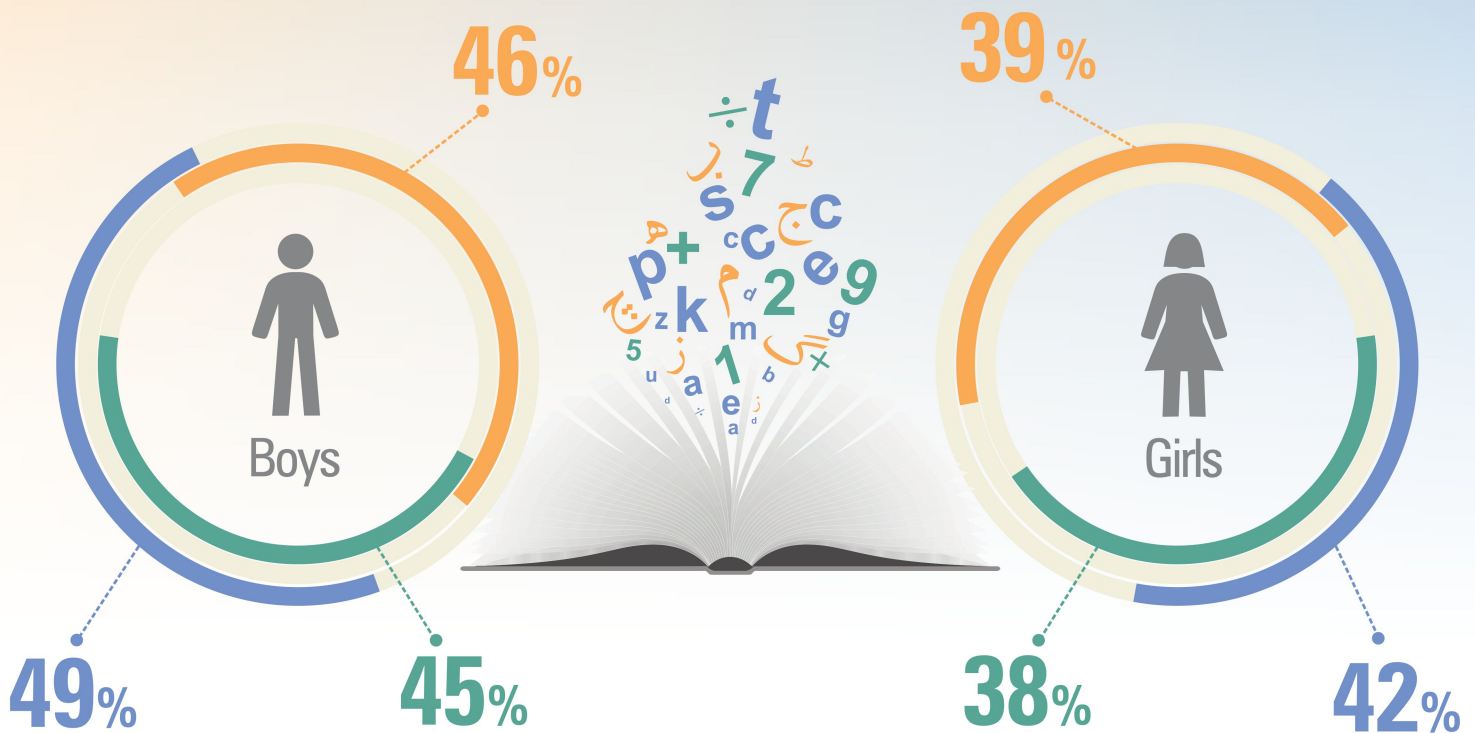
(Class 5)

- **English:** 58% class 5 children could not read sentences (class 2 level) compared to 57% in 2013.
- **Urdu/Sindhi/Pashto:** 54% class 5 children could not read class 2 story in Urdu/Sindhi/Pashto compared to 50% in 2013.
- **Arithmetic:** 60% class 5 children could not do two digit division as compared to 57% in 2013.



LEARNING LEVELS

By gender (5-16 years)



- Can read at least words in **English**
- Can read at least sentences in **Urdu/Sindhi/Pashto**
- Can do at least subtraction in **Arithmetic**

Government primary schools

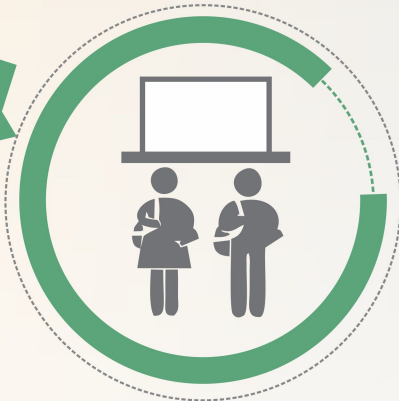
Children attendance (On the day of survey)

82%



88%

Teacher attendance (On the day of survey)



Schools received grants/funds

26%



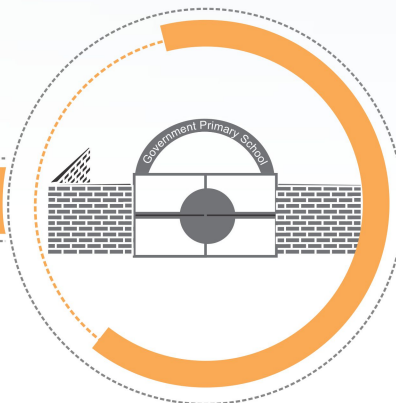
57%

Useable water



Boundary wall

61%



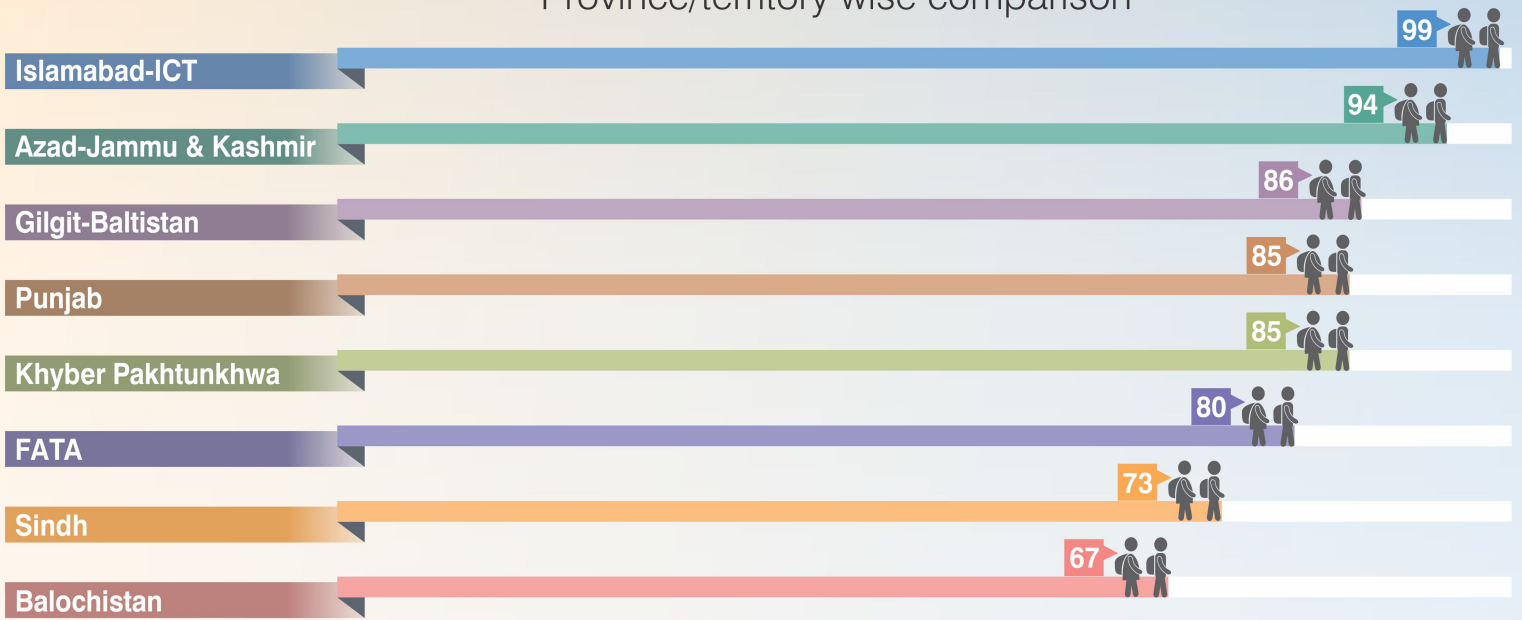
51%

Useable toilets



ENROLLMENT

% of Children (6-16 years) enrolled
Province/territory wise comparison



LEARNING LEVELS

By province/territory (Class 5)

