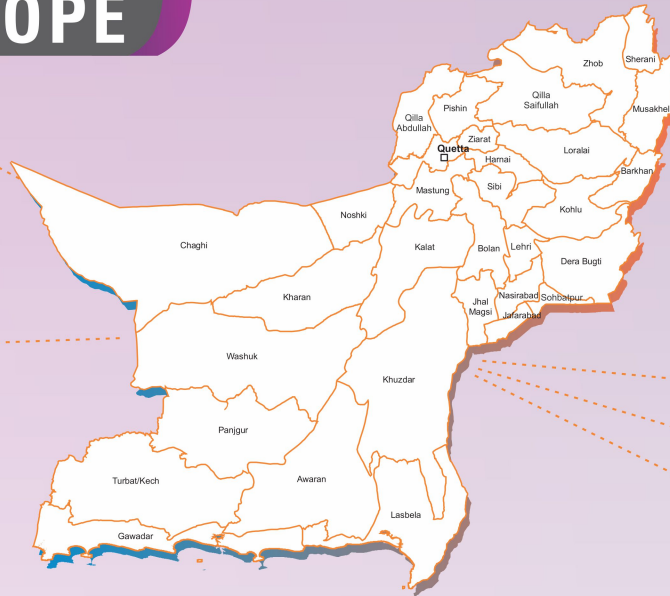


SCALE & SCOPE

60,535
 Children
 3-16 Years

32
 Rural Districts



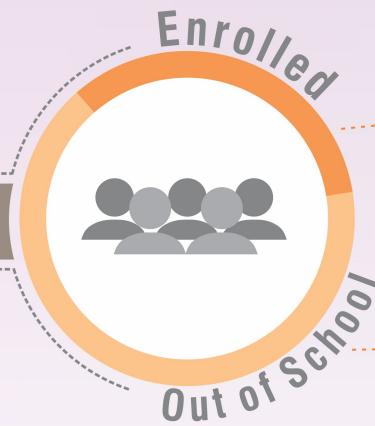
BALUCHISTAN RURAL

- 899 Schools
- 947 Villages
- 18,536 Households

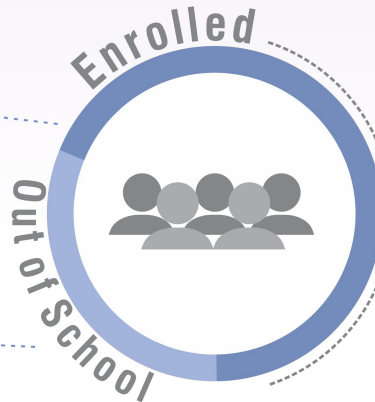
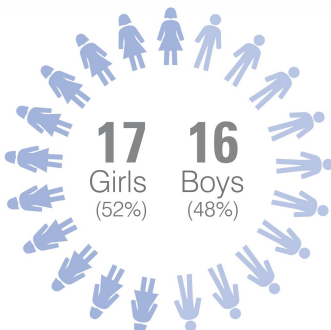
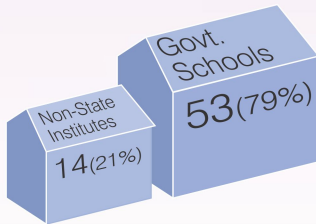
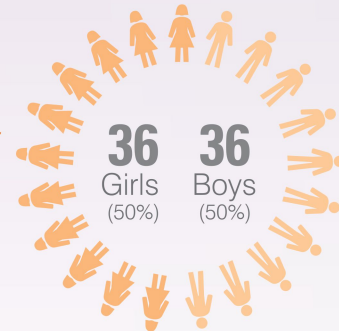
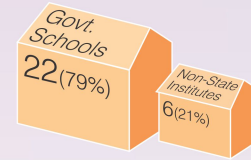
ENROLLMENT

3-5 years

Proportion of out-of-school children (3-5 years) has decreased as compared to 2013 (81%).



28%



6-16 years

Proportion of enrolled children (6-16 years) has increased as compared to 2013 (66%).

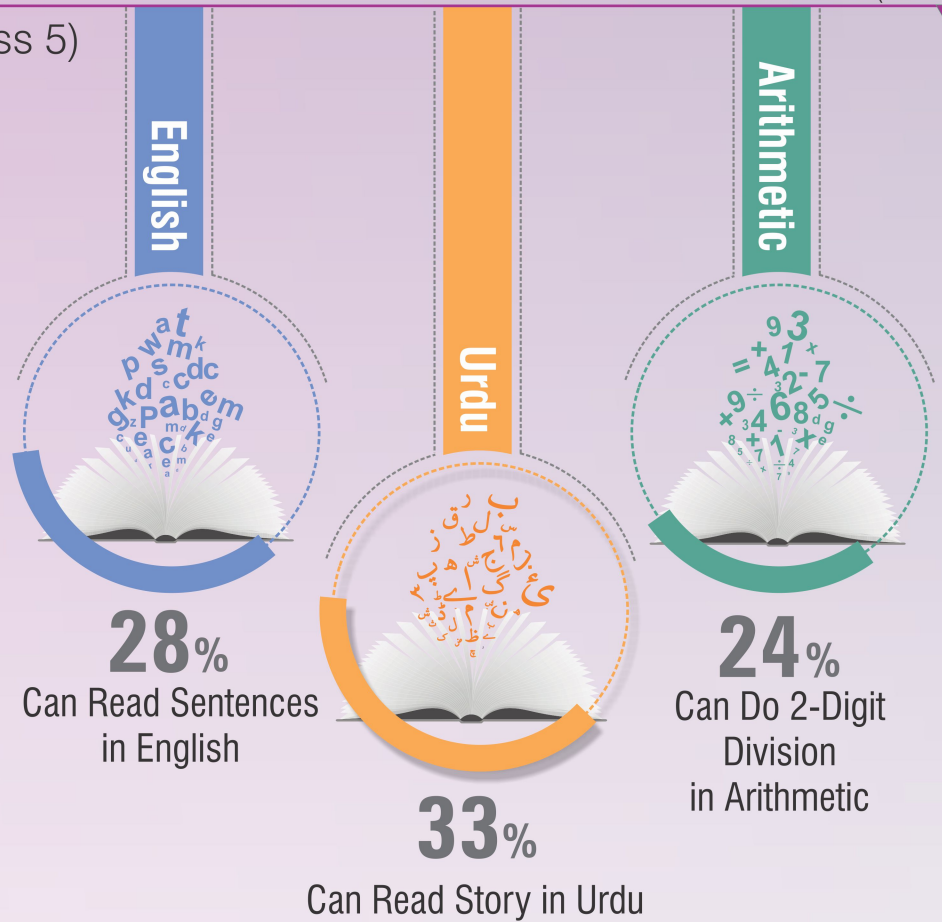
67%

33%

LEARNING LEVELS

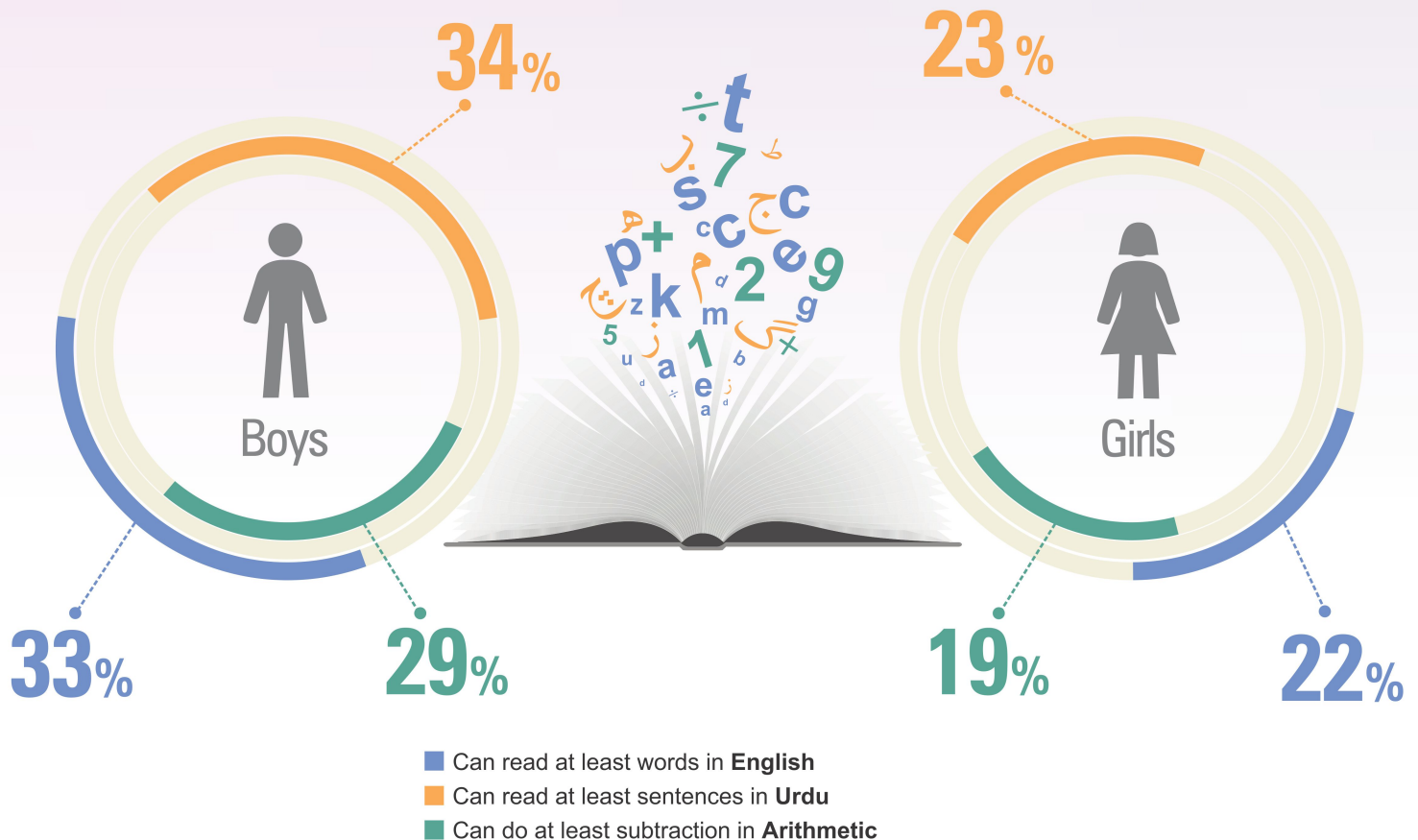
(Class 5)

- **English:** 72% class 5 children could not read sentences (class 2 level) compared to 71% in 2013.
- **Urdu:** 67% class 5 children could not read class 2 story in Urdu compared to 51% in 2013.
- **Arithmetic:** 76% class 5 children could not do two digit division as compared to 61% in 2013.



LEARNING LEVELS

By gender (5-16 years)



- Can read at least words in **English**
- Can read at least sentences in **Urdu**
- Can do at least subtraction in **Arithmetic**

FACILITIES AVAILABLE

Government primary schools

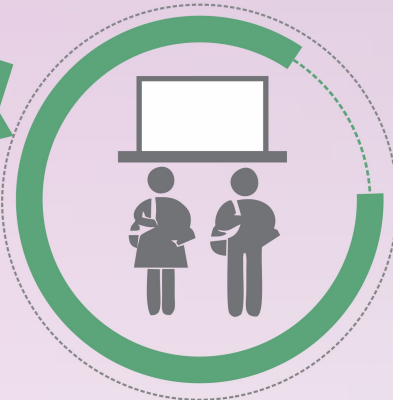
Children attendance (On the day of survey)

80%



85%

Teacher attendance (On the day of survey)



1%

Schools received grants/funds



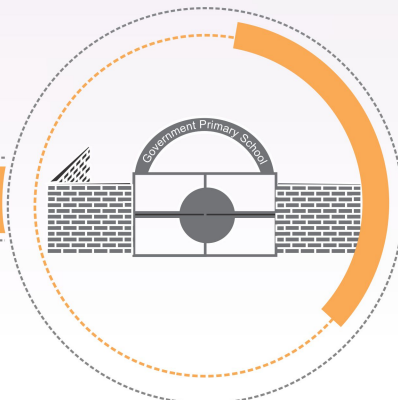
26%

Useable water



34%

Boundary wall



19%

Useable toilets



AREA WISE COMPARISON

% of Children

ENROLLMENT

LEARNING LEVELS (CLASS 5)

Name of Rural Districts	Enrollment (6-16 years)	English	Urdu	Arithmetic	Rank
		Who can read sentences	Who can read story	Who can do 2-digit division	Based on children enrolled (6-16 years)
Panjgur	95.9	4.2	7.4	6.7	1
Kharan	93.4	68.2	88.2	48.6	2
Quetta	90.9	76.8	70.7	53.2	3
Qilla Saifullah	89.0	81.3	84.8	77.2	4
Ziarat	85.6	38.3	44.7	10.6	5
Loralai	83.6	35.6	25.0	30.0	6
Kech (Turbat)	81.9	43.1	39.7	44.8	7
Sibi	80.9	4.9	13.8	29.6	8
Nushki	79.4	11.3	46.2	33.1	9
Chaghi	78.8	28.7	47.3	38.3	10
Khuzdar	78.1	26.3	35.0	2.9	11
Kohlu	77.6	44.3	5.9	15.6	12
Pishin	75.1	12.4	46.8	10.9	13
Nasirabad	71.3	2.1	3.8	2.7	14
Qilla Abdullah	70.6	0.0	5.0	4.0	15
Lasbela	69.3	51.7	53.3	63.3	16
Barkhan	68.8	7.5	13.0	11.7	17
Bolan	67.9	13.3	14.5	7.9	18
Awaran	66.7	8.9	12.9	14.9	19
Jafarabad	66.6	48.1	84.3	57.0	20
Washuk	64.2	11.5	8.2	8.2	21
Lehri*	63.2	0.0	2.6	20.5	22
Zhob	61.2	39.4	83.3	44.6	23
Jhal Magsi	60.2	59.1	60.6	47.2	24
Sohbatpur*	57.0	16.7	52.1	66.7	25
Sherani	55.9	32.0	56.8	28.0	26
Gwadar	50.9	2.1	9.4	4.2	27
Musakhel	46.8	0.0	64.7	17.6	28
Harnai	44.9	9.4	24.5	9.4	29
Mastung	39.4	5.7	16.7	1.9	30
Dera Bugti	35.8	8.3	8.3	13.3	31
Kallat	34.6	5.3	2.6	0.0	32

*Lehri and Sohbatpur got administrative status as district in 2014.

**0.0 represents insufficient data.