

SCALE & SCOPE

54,365
 Children
 3-16 Years

35
 Rural Districts



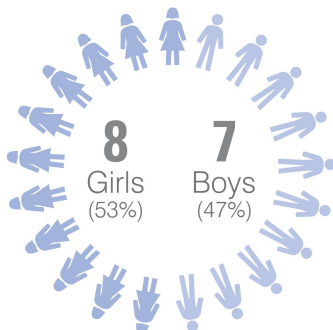
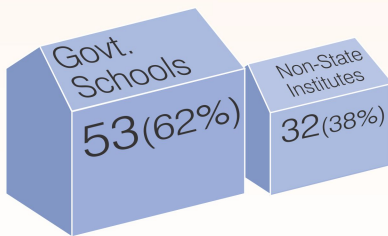
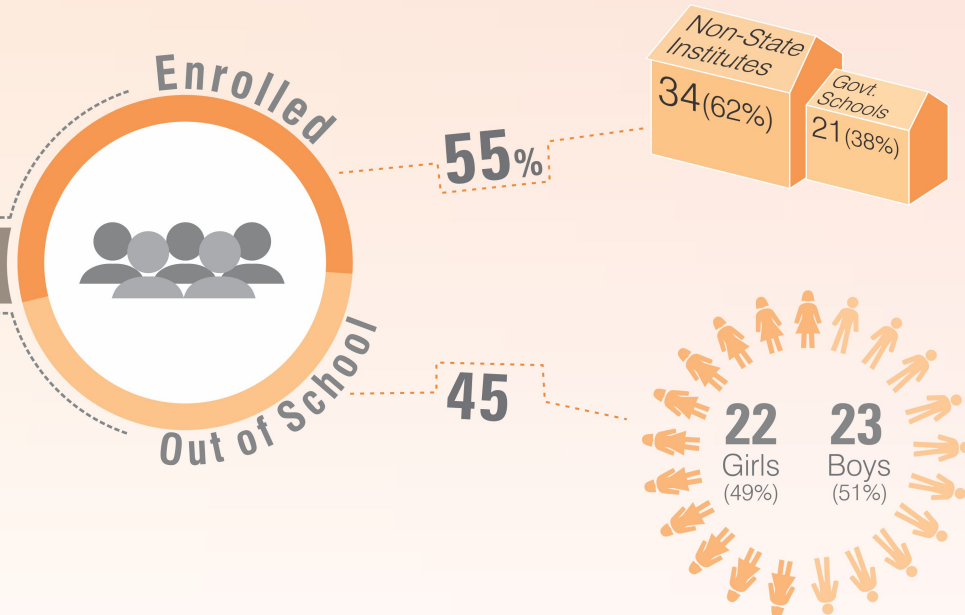
PUNJAB RURAL

- 1,654 Schools
- 997 Villages
- 19,888 Households

ENROLLMENT

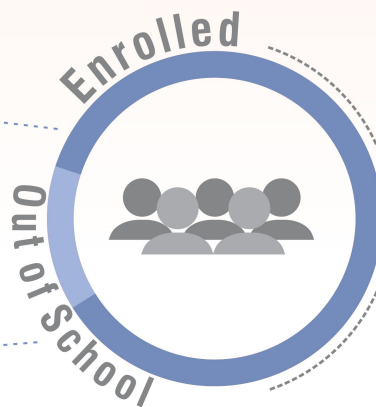
3-5 years

Proportion of out-of-school children (3-5 years) has decreased as compared to 2013 (47%).



85%

15%



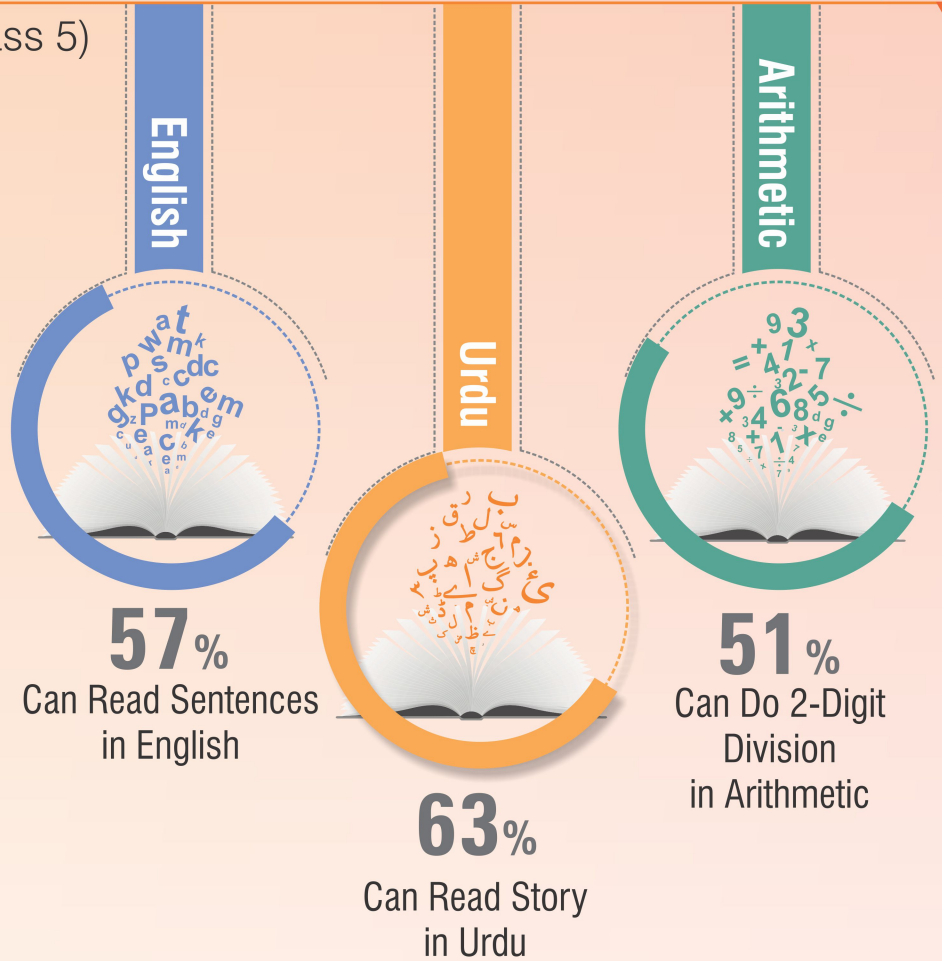
6-16 years

Proportion of enrolled children (6-16 years) has increased as compared to 2013 (84%).

LEARNING LEVELS

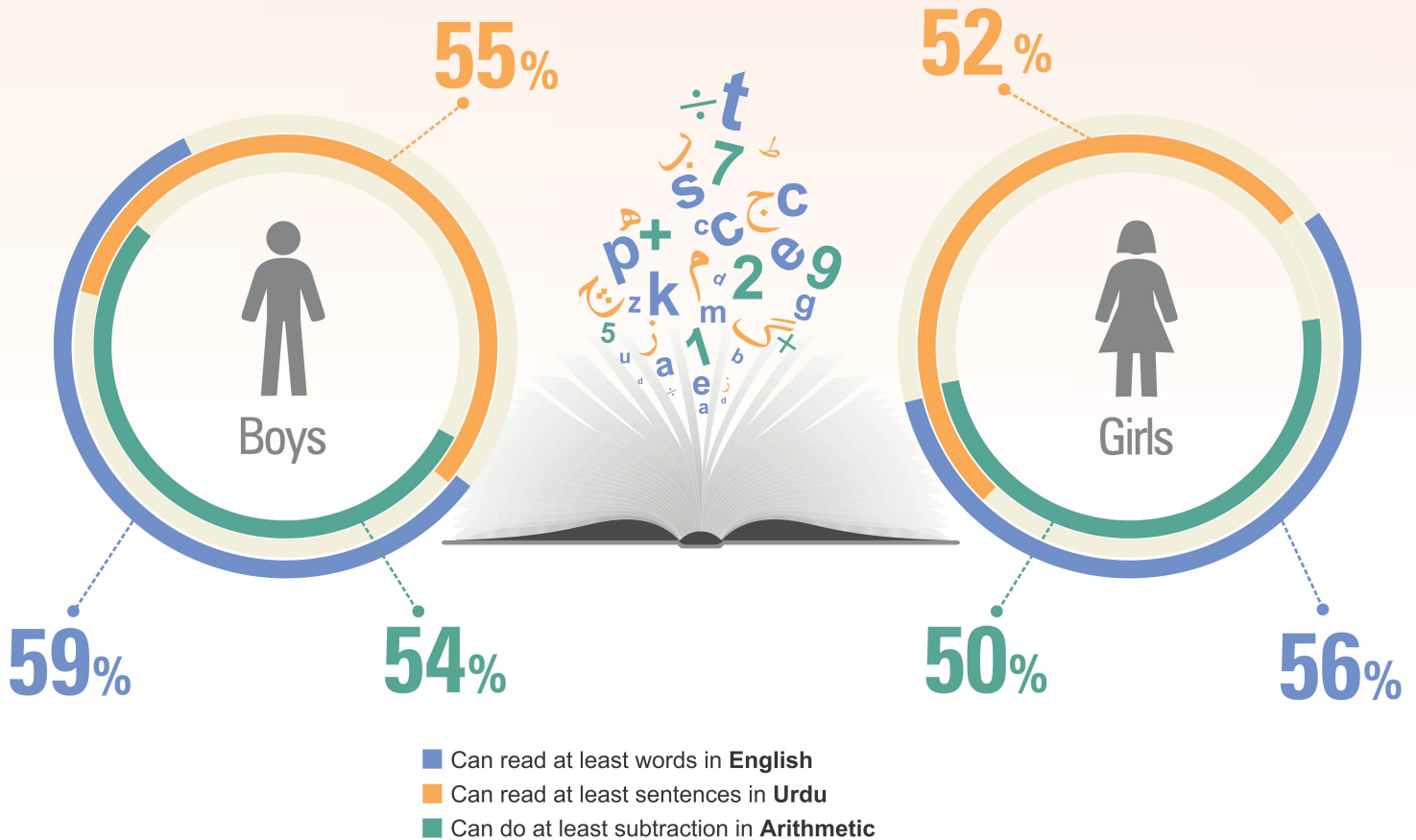
(Class 5)

- **English:** 43% class 5 children could not read sentences (class 2 level) compared to 38% in 2013.
- **Urdu:** 37% class 5 children could not read class 2 story in Urdu compared to 34% in 2013.
- **Arithmetic:** 49% class 5 children could not do two digit division as compared to 44% in 2013.



LEARNING LEVELS

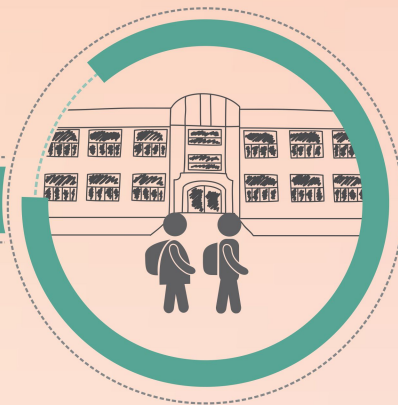
By gender (5-16 years)



Government primary schools

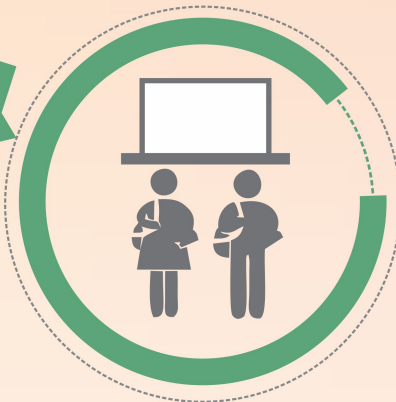
Children attendance (On the day of survey)

89%



92%

Teacher attendance (On the day of survey)



Schools received grants/funds

62%



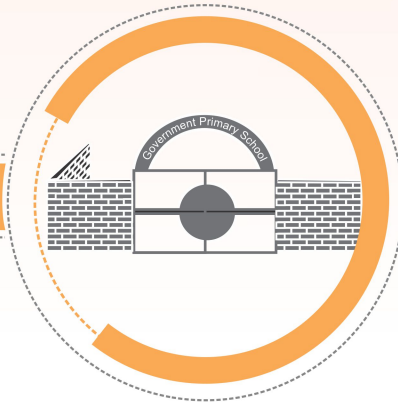
88%

Useable water



Boundary wall

86%



92%

Useable toilets



AREA WISE COMPARISON

% of Children

ENROLLMENT

LEARNING LEVELS (CLASS 5)

English

Urdu

Arithmetic

Rank

Name of Rural Districts	Enrollment (6-16 years)	Who can read sentences	Who can read story	Who can do 2-digit division	Rank
Rawalpindi	98.0	69.2	74.4	56.7	1
Gujrat	96.9	64.8	71.9	51.7	2
Chakwal	95.5	50.0	50.0	49.2	3
Mandi Bahuddin	94.4	61.4	58.7	53.8	4
Sialkot	94.3	49.5	44.9	24.3	5
Narowal	93.6	63.5	65.7	51.8	6
Jhelum	93.3	41.5	45.6	29.3	7
Attock	93.1	45.2	69.5	38.1	8
Mianwali	92.3	53.7	52.0	54.5	9
Hafizabad	91.1	61.2	74.5	56.5	10
Faisalabad	90.8	59.1	65.9	42.0	11
Sheikhupura	90.7	53.3	67.8	40.2	12
Nankana Sahib	90.1	72.4	78.2	63.5	13
Gujranwala	90.0	45.7	44.4	37.0	14
Sargodha	88.6	54.9	73.1	42.5	15
Khushab	88.6	46.5	44.7	32.5	16
Sahiwal	87.9	46.8	45.2	53.2	17
Lodhran	87.6	54.5	63.9	50.8	18
T.T.Singh	87.1	73.7	79.6	81.8	19
Layyah	86.4	44.5	55.4	49.6	20
Kasur	84.7	43.1	52.1	41.5	21
Okara	83.7	49.5	56.5	48.9	22
Jhang	83.5	73.5	80.7	66.4	23
Khanewal	83.2	77.0	67.0	68.0	24
Vehari	82.6	62.2	63.4	44.6	25
Lahore	82.4	42.6	46.3	29.1	26
Pakpattan	81.7	58.6	76.9	72.5	27
Bhakkar	81.1	78.9	83.6	82.5	28
Chiniot	79.7	60.0	78.5	64.6	29
Bahawalnager	79.4	58.1	67.4	48.4	30
Muzaffar Garh	77.7	50.0	66.0	53.8	31
Multan	68.8	25.8	32.3	26.3	32
Bahawalpur	66.8	63.8	63.8	48.3	33
Rahim Yar Khan	65.3	67.9	64.7	64.8	34
Rajanpur	60.4	54.1	47.1	41.2	35

*D.G. Khan was not surveyed in 2014.