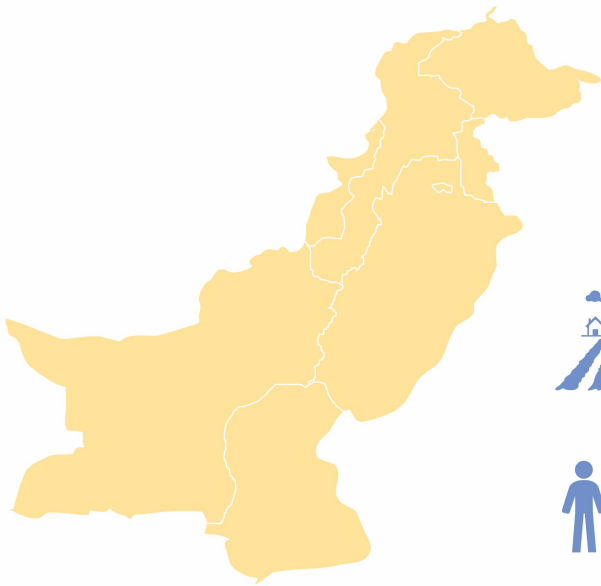


ANNUAL STATUS OF EDUCATION REPORT 2015

SCALE & SCOPE

(NATIONAL - RURAL)



 **146**
Rural Districts

 **4,217**
Villages

 **83,755**
Households

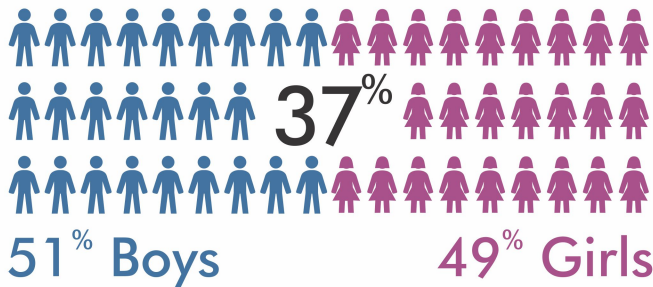
 **258,021**
Children (3-16 Years)

 **5,650**
Schools

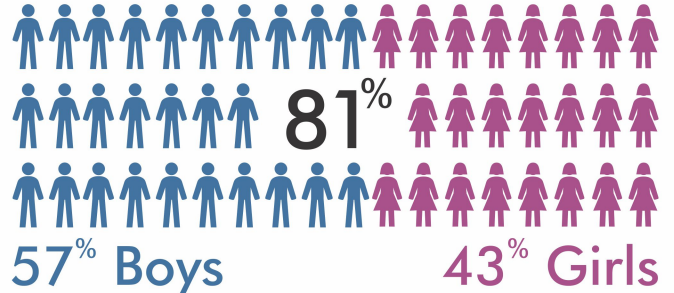
ENROLLMENT

(NATIONAL - RURAL)

3-5 Years (Enrolled)



6-16 Years (Enrolled)



70%
Govt. Schools



30%
Pvt. Schools



76%
Govt. Schools

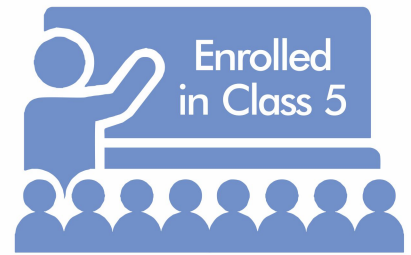
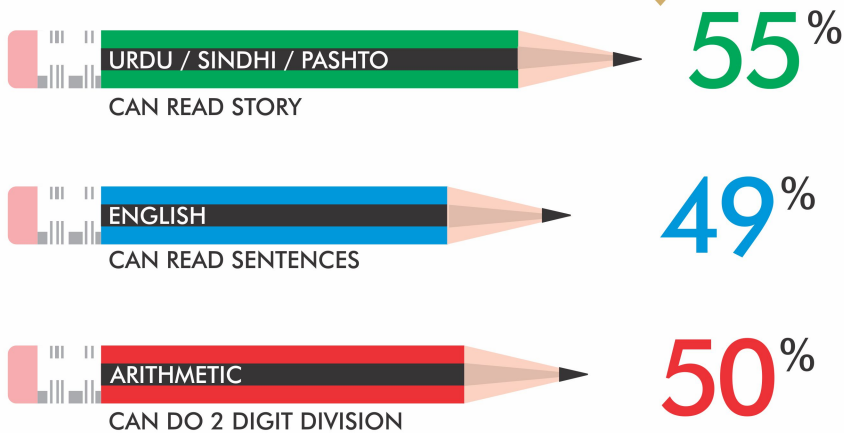


24%
Pvt. Schools

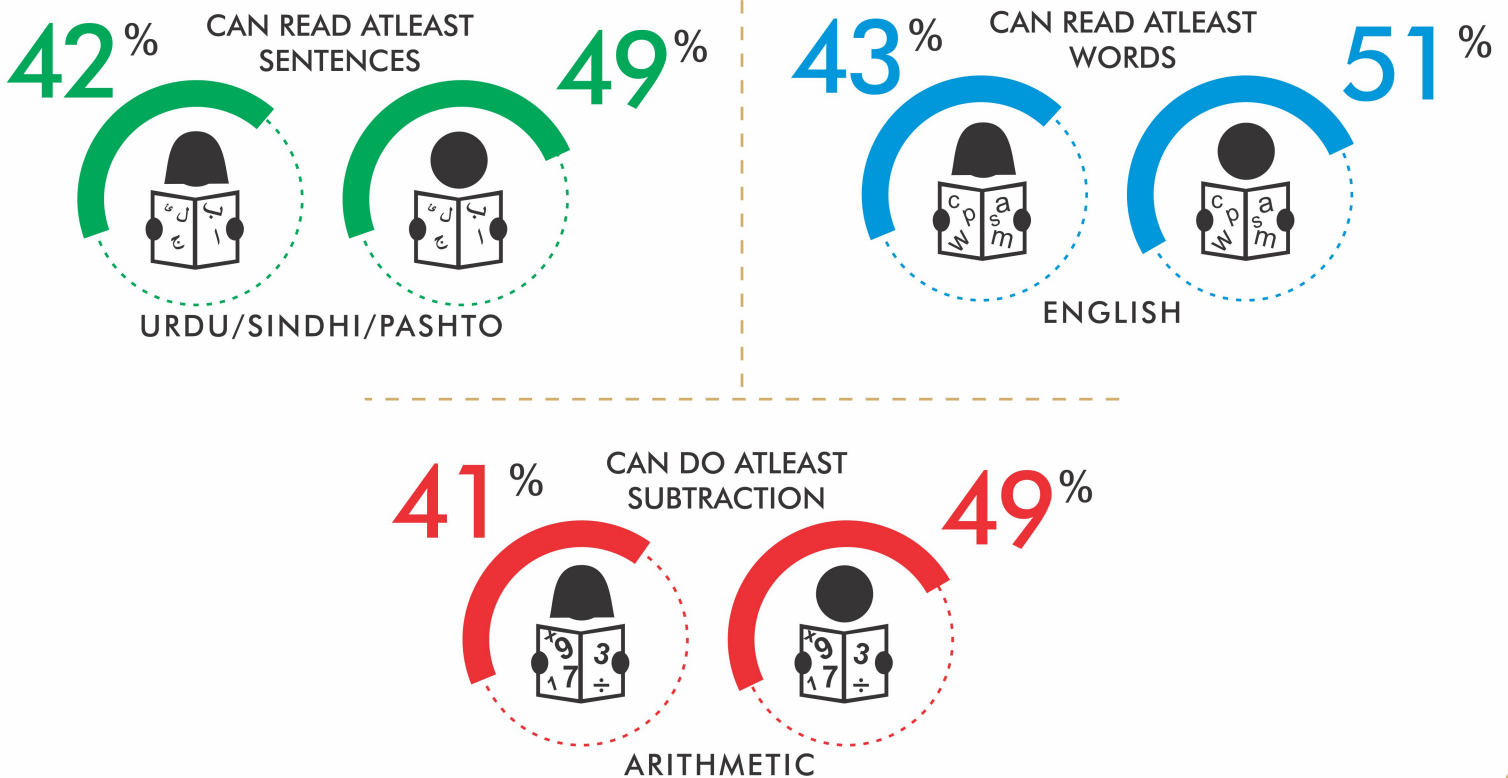
ANNUAL STATUS OF EDUCATION REPORT 2015

LEARNING LEVELS (NATIONAL - RURAL)

BY CLASS



BY GENDER (5-16 YEARS)



ANNUAL STATUS OF EDUCATION REPORT 2015

FACILITIES (NATIONAL - RURAL)

Govt. Primary Schools

Pvt. Primary Schools

TEACHER ATTENDANCE (On the day of survey)

89%



91%



CHILDREN ATTENDANCE (On the day of survey)

84%



90%



USEABLE WATER

60%



82%



SCHOOL RECEIVED GRANTS/FUNDS*

29%



02%

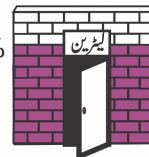


USEABLE TOILET

52%



78%



BOUNDARY WALL

63%



65%



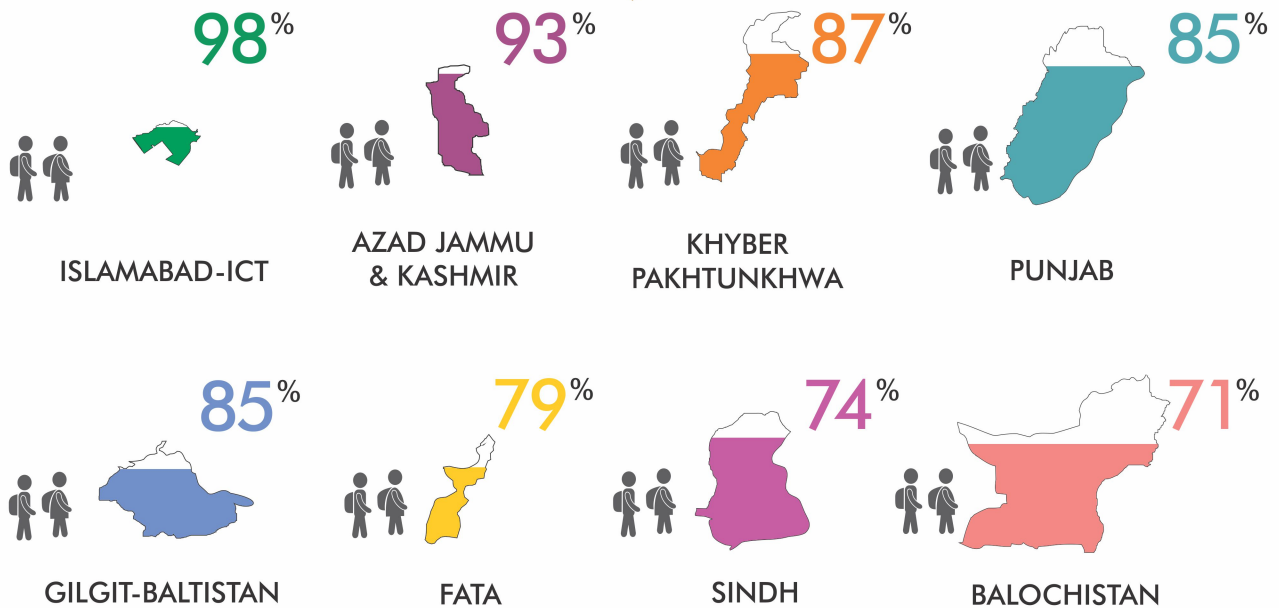
*Grants received till September 30, 2015

ANNUAL STATUS OF EDUCATION REPORT 2015

PROVINCIAL COMPARISON

(NATIONAL - RURAL)

ENROLLMENT 6-16 YEARS



LEARNING LEVELS - CLASS 5

